



SELECTIVE DryCow TOOL

Bulk SCC Results

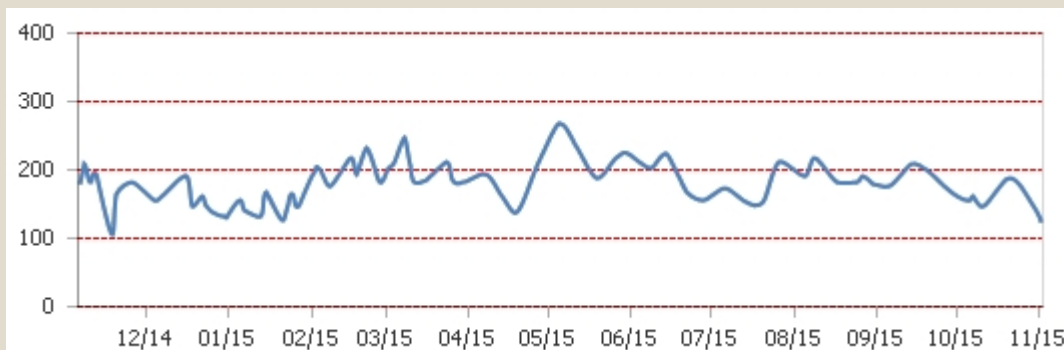
Data provided by NML from daily bulk testing

Average SCC for year

180

% Results over 200,000

26.0%



400 + 0.0%

300 - 400 0.0%

200 - 300 26.0%

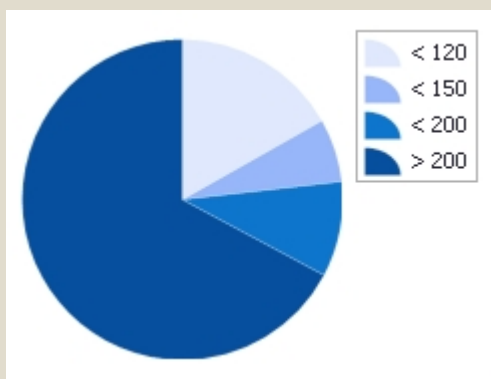
100 - 200 74.0%

Individual Cow SCC

Data populated if recording with NMR

Lactation SCC

Max cell count of all lactations completed last year.



Max Lactation SCC < 120

17%

Max Lactation SCC < 150

23%

Max Lactation SCC < 200

33%

Dry Period Management

% Animals Over 200,000 SCC 1st Recording

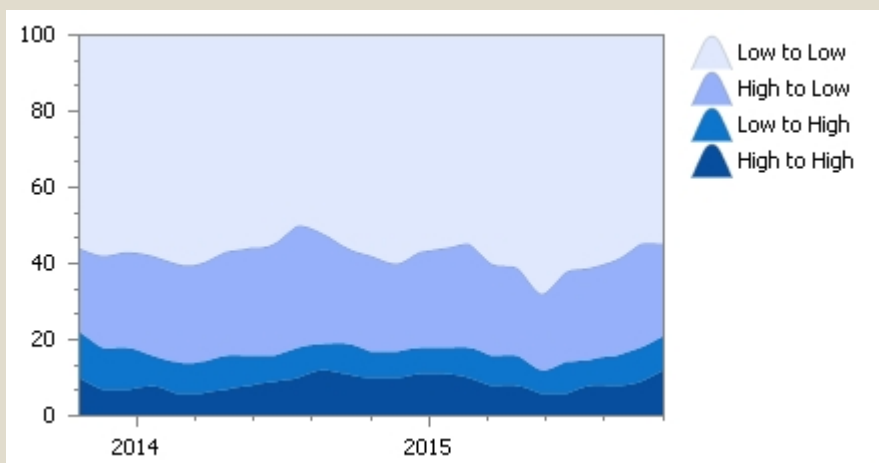
21%

High to High 12%

55% Low to Low

Low to High 9%

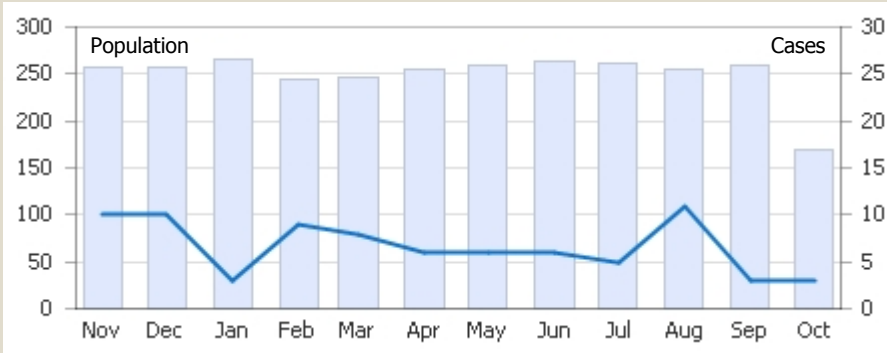
24% High to Low



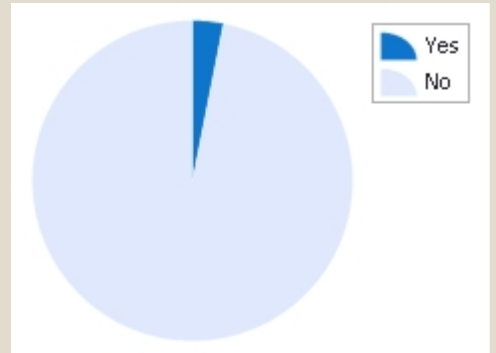
Clinical Mastitis Cases

Mastitis events if recorded through NMR

Mastitis Case Occurrence by Month



Proportion of herd with mastitis in first 30 days of lactation



Total Cases in Year

80

Cases per 100 cows

32

Cases within 30 days in milk

9

Mastitis Pathogen Breakdown

Bulk samples tested quarterly by NML

Pathogen Type	Pathogen	Prevalence Level			Prevalence Level			Prevalence Level			Q3 2015				
		Test Result	Prevalence Level			Test Result	Prevalence Level			Test Result	Prevalence Level				
			+	++	+++		+	++	+++		+	++	+++	+	++
Penicillin Resistance	Staphylococcal β -lactamase gene											POS			
Contagious	Staphylococcus aureus											NEG			
	Streptococcus agalactiae											NEG			
	Streptococcus dysgalactiae											POS			
	Staphylococcus species (CNS)											POS			
	Corynebacterium bovis											NEG			
Environmental	Escherichia coli											NEG			
	Streptococcus uberis											NEG			
	Klebsiella species											NEG			
	Enterococcus species											NEG			
	Serratia marcescens											NEG			
	T. pyogenes and P. indolicus											NEG			

This report needs to be assessed with input from your vet. It should be noted that there may be a need for individual cow pathogen testing prior to making decisions on dry cow treatment strategies.

